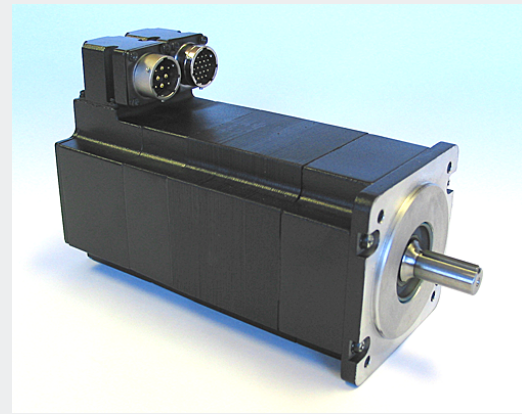
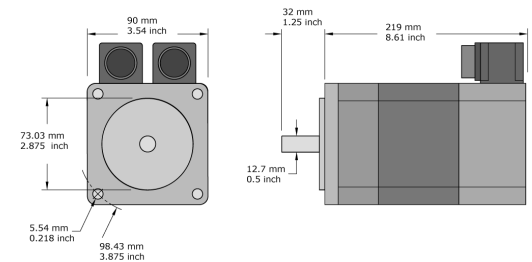
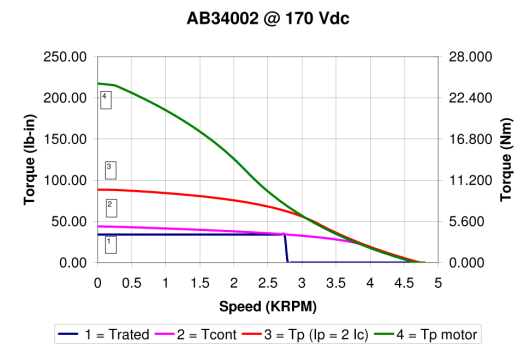
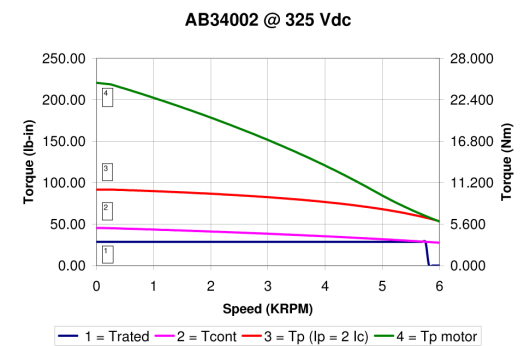


- Designed with medium to high Ke to accommodate low to medium buss voltage applications
- Voltage rating up to 325 Vdc for offline drives
- IP65 environmental construction
- Compact bearing type, optical encoders (optional)
- External NEMA 34 24Vdc holding brake (optional)
- Precision servo gearing (optional)



Ratings	Symbol		Units
Continuous Stall Torque	Tcs	4.972 (44.00)	Nm (lb-in)
Peak Stall Torque	Tps	24.929 220.62	Nm (lb-in)
No Load Max. Speed	ω nl	6000	RPM
Continuous Rated Torque	Tcr	2.333 (20.65)	Nm (lb-in)
Peak Rated Torque	Tpr	4.667 (41.30)	Nm (lb-in)
Rated Speed	ω rated	4900	RPM
Rated Power	W (HP)	1197 (1.60)	Watts (HP)
Inductance L-L	L	2.18	mH
Resistance L-L	R	0.55	ohms
Max. Terminal Voltage	V dc	325	Vdc
WINDING			
SINUSOIDAL AC VALUES			
Current at Cont. Stall Torque, o-p	A rms	11.41	Amp
Current at Peak Torque, o-p	A peak	80.65	Amp
Torque Constant L-L	Kt rms	0.249 (2.20)	Nm/A rms (lb-in/A)
Voltage Constant L-L	Ke rms	0.25 (26.06)	V/rad/sec (V/kRPM)
TRAPEZOIDAL DC VALUES			
Current at Cont. Stall Torque, o-p	A dc	16.13	Amp
Current at Peak Torque, o-p	A dc	80.65	Amp
Torque Constant L-L	Kt dc	0.333 (2.95)	Nm/A (lb-in/A)
Voltage Constant L-L	Ke dc	0.334 (35.00)	V/rad/sec (V/kRPM)
MECHANICAL			
Max. Axial Shaft Load	Fa	44.48 (10.00)	N (lb)
Max. Radial Shift Load	Fr	133.45 (30.00)	N (lb)
Motor Constant, L-L Trapezoidal	Km	0.43 (3.82)	Nm/ \sqrt{w} (lb-in/ \sqrt{w})
Motor Inertia	Jm	0.00029663 (0.0026250)	Kg-m ² (lb-in-s ²)
Motor Weight		6.450 (14.22)	Kg (lb)
Thermal Resistance	Rth	0.60	°C/Watt
Thermal Time Constant	TTC	0.00	min
Max. Winding Temperature	Tw	155	°C



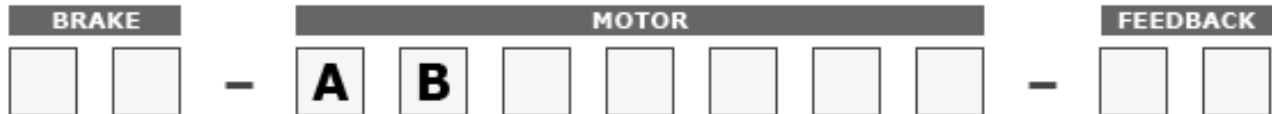
*Test conditions: Motor operated at rated winding temperature, mounted to an aluminum heat-sink.
Aluminum Heat-sink: 12 x 12 x 1/2



MOTION CONTROL GROUP

888-624-3478 (U.S. & Canada)
+1 507-233-7000 (All other countries)
www.motioncontrolgroup.com
sales@motioncontrolgroup.com

Configure Order Number



Standard motor assemblies can be configured using the catalog number format above and motor options listed below.

Motor options are typically stocked as separate components and can be quickly assembled to order.

Cables and connector kits are motor accessories and ordered as separate items.

Examples of configured motor assemblies:

AB23000-Q1 - AB23000 Motor with 1000 Line Encoder, 5 Vdc 3Ch w/ Line Driver

B5-AB34002-C8 - AB34002 Motor, B5 Brake and 5000 Line Commutation Encoder, 5 Vdc 6 Ch w/ LD

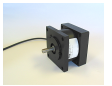
Contact MCG for any required special features not listed here.

MOTOR OPTIONS

Brakes

Holding Brakes - Eternal "Bolt-On" Mounting

B5 Brake, 24 Vdc, NEMA 34 w/ 1/2 inch output shaft



Feedback

MOTOR ACCESSORIES

Cables & Connectors

Connector Kits - Power and Feedback MS Type

9700226 Mating MS bayonet style Power Connector Kit, 8 solder contacts

9700227 Mating MS bayonet style Feedback Connector Kit, 19 solder contacts



MOTION CONTROL GROUP

888-624-3478 (U.S. & Canada)
+1 507-233-7000 (All other countries)
www.motioncontrolgroup.com
sales@motioncontrolgroup.com