



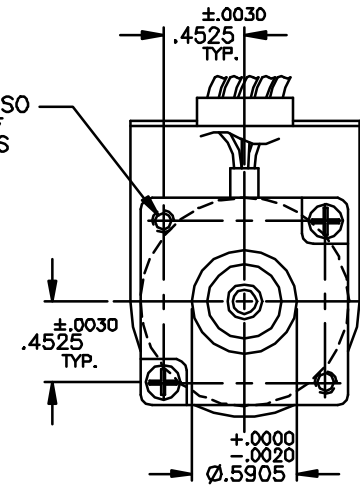
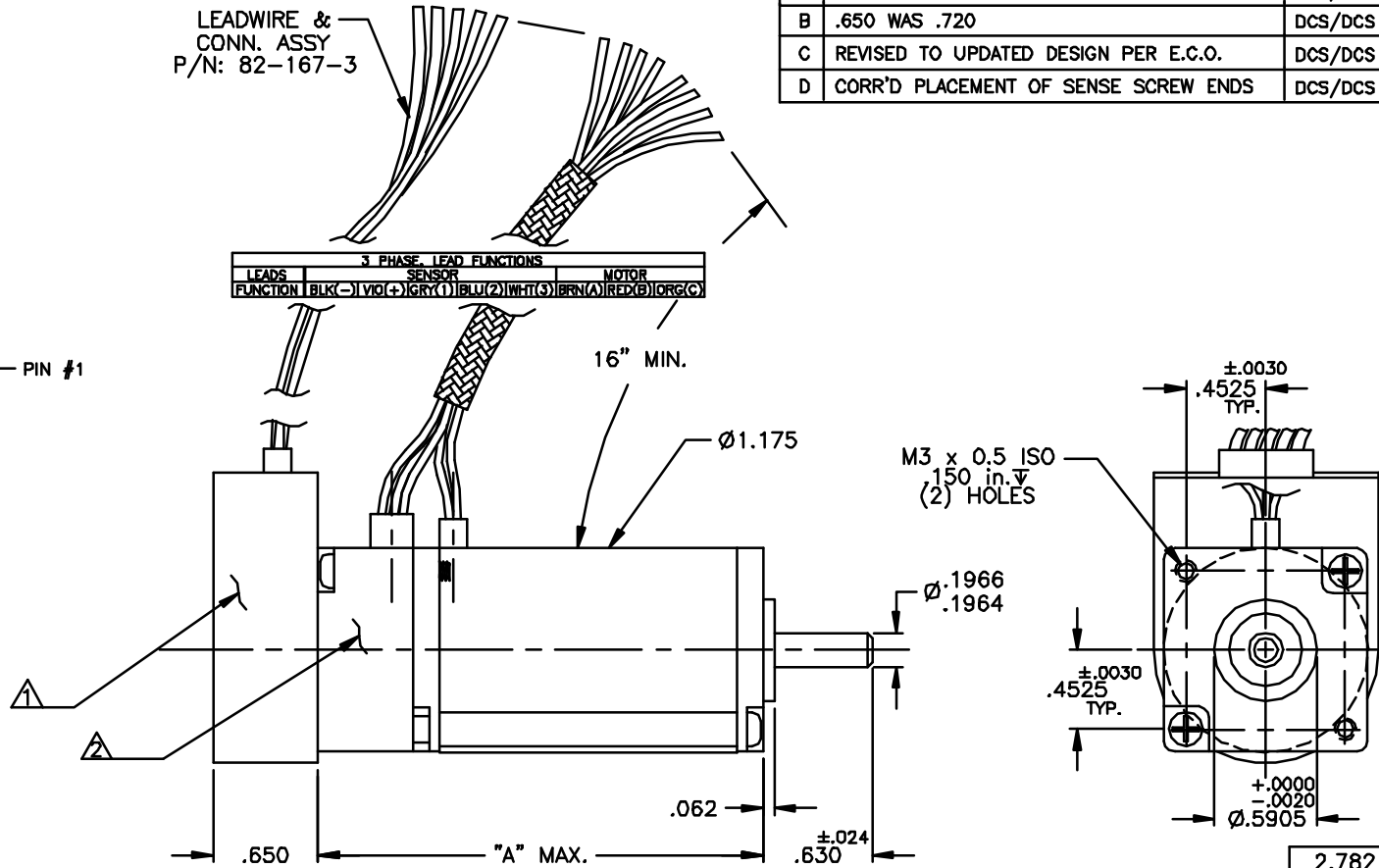
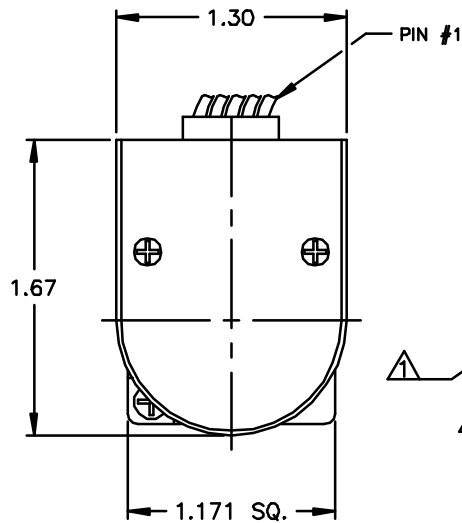
NOTICE: CONFIDENTIAL PROPRIETARY INFORMATION THIS PRINT CONTAINS IDEAS, INFORMATION, AND INTELLECTUAL PROPERTY WHICH ARE THE EXCLUSIVE PROPERTY OF PITTMAN, DIVISION OF PENN ENGINEERING & MANUFACTURING CORP. RECIPIENT MUST KEEP THE INFORMATION DISCLOSED HEREIN CONFIDENTIAL AND RECEIPT IS EXPRESSLY PROHIBITED FROM COPYING OR PUBLICATION OF THIS PRINT EXCEPT TO OTHERS IN THEIR ORGANIZATION ON A NEED-TO-KNOW BASIS

REVISIONS				
LTR	DESCRIPTION	DRFT/ENGR	DATE	APPR
A	PRODUCTION RELEASE	DCS/DCS	12/2/96	S.D.
B	.650 WAS .720	DCS/DCS	12/30/96	S.D.
C	REVISED TO UPDATED DESIGN PER E.C.O.	DCS/DCS	9/12/97	JVM
D	CORR'D PLACEMENT OF SENSE SCREW ENDS	DCS/DCS		

ENCODER P/N CONNECTION CHART		
COLOR	PIN No.	CONNECTION
BLACK	1	GROUND
GREEN	2	INDEX
YELLOW	3	CHANNEL A
RED	4	Vcc
BLUE	5	CHANNEL B

LEADWIRE & CONN. ASSY  
P/N: 82-167-3

3 PHASE LEAD FUNCTIONS		
LEADS	SENSOR	MOTOR
FUNCTION	BLK(-)   VIO(+)   GRN(1)	BLU(2)   WHT(3)   BRN(A)   RED(B)   ORG(C)



2.782	3442
2.382	3441
"A"	MODEL No.

NOTE(S):

- 1. ENCLOSED IS A HEWLETT PACKARD OPTICAL ENCODER MODEL HEDS-9140.
- 2. ENCLOSED IS A 3 PHASE (LO-TEMP) HALL SENSE ASSEMBLY.
- 3. BALL BEARINGS ARE PRELOADED SO THAT 4.0 LBS. AXIAL FORCE SHALL YIELD .002 TO .008 AXIAL SHAFT MOVEMENT.

UNLESS OTHERWISE SPECIFIED DIMENSIONS ARE IN INCHES TOLERANCES ARE: FRACTION DECIMAL ANGLES ±1/64 .015 ±1° XX ±.010 XXX ±.005 BREAK ALL SHARP EDGES	FILE: 150\528	
	DRAFTED BY: DCS DATE: 11/28/96	
MATERIAL:	ENGINEERED BY: DCS DATE: 11/28/96	DWG. NO. B-150-528
FINISH:	APPROVED BY: S.D. DATE: 12/2/96	REV. D
	NEXT ASSY:	SCALE: NONE SHEET 1
	USED ON:	